

**ELK GROVE POLICE DEPARTMENT**  
**CRIME BY BEAT**  
 May 2007

CRIME BY TITLE	Beat 1	Beat 2	Beat 3	Beat 4	Beat 5	TOTAL
Arson	0	0	0	0	0	0
Assault - Felony	2	11	3	1	1	18
Assault - Misdemeanor	2	2	2	1	1	8
Auto Theft	5	11	7	9	8	40
Burglary - Business	0	11	2	1	10	24
Burglary - Residential	5	20	14	12	7	58
Burglary - Vehicle	6	18	6	11	9	50
Child Abuse/Neglect	1	2	0	2	1	6
Domestic Violence	4	10	4	5	3	26
Elder Abuse	0	0	0	0	1	1
Financial Crimes	3	10	5	4	4	26
Hate Crimes	0	0	0	1	0	1
Homicide/Attempted	1	0	0	1	0	2
Narcotics/Drugs	2	3	11	4	5	25
Others	8	47	24	23	32	134
Parole/Probation	0	0	0	1	0	1
Rape	0	1	0	0	0	1
Robbery	2	6	1	4	1	14
Sex Crimes - Adult	0	1	0	0	0	1
Sex Crimes - Minor	0	0	0	0	0	0
Theft - Felony	2	7	7	6	6	28
Theft - Misdemeanor	1	10	4	5	8	28
Vandalism	10	12	9	9	10	50
<b>Totals</b>	<b>54</b>	<b>182</b>	<b>99</b>	<b>100</b>	<b>107</b>	<b>542</b>

Figures based on E-Reports data and cannot be considered complete.

Prepared by K. Reichle  
 EGPD Crime Analyst

Crime Type	Beat 1			Beat 2			Beat 3			Beat 4			Beat 5		
	May-06	May-07	%	May-06	May-07	%	May-06	May-07	%	May-06	May-07	%	May-06	May-07	%
Arson	0	0	N/C	1	0	-100%	0	0	N/C	0	0	N/C	0	0	N/C
Assault - Felony	1	2	100%	2	11	450%	2	3	50%	1	1	0%	1	1	0%
Assault - Misdemeanor	0	2	N/C	3	2	-33%	1	2	100%	0	1	N/C	1	1	0%
Auto Theft	4	5	25%	20	11	-45%	14	7	-50%	11	9	-18%	13	8	-38%
Burglary - Business	1	0	-100%	10	11	10%	2	2	0%	2	1	-50%	4	10	150%
Burglary - Residential	3	5	67%	21	20	-5%	8	14	75%	7	12	71%	15	7	-53%
Burglary - Vehicle	8	6	-25%	29	18	-38%	21	6	-71%	19	11	-42%	16	9	-44%
Child Abuse/Neglect	0	1	N/C	0	2	N/C	2	0	-100%	1	2	100%	1	1	0%
Domestic Violence	2	4	100%	8	10	25%	3	4	33%	4	5	25%	1	3	200%
Elder Abuse	0	0	N/C	0	0	N/C	0	0	N/C	0	0	N/C	0	1	N/C
Financial Crimes	1	3	200%	15	10	-33%	2	5	150%	0	4	N/C	0	4	N/C
Hate Crimes	0	0	N/C	0	0	N/C	0	0	N/C	0	1	N/C	0	0	N/C
Homicide/Attempted	0	1	N/C	0	0	N/C	0	0	N/C	0	1	N/C	0	0	N/C
Narcotics/Drugs	0	2	N/C	6	3	-50%	2	11	450%	2	4	100%	6	5	-17%
Others	0	8	N/C	11	47	327%	9	24	167%	4	23	475%	0	32	N/C
Parole/Probation	0	0	N/C	0	0	N/C	0	0	N/C	0	1	N/C	0	0	N/C
Rape	0	0	N/C	0	1	N/C	0	0	N/C	0	0	N/C	0	0	N/C
Robbery	0	2	N/C	3	6	100%	0	1	N/C	2	4	100%	2	1	-50%
Sex Crimes - Adult	0	0	N/C	1	1	0%	0	0	N/C	1	0	-100%	1	0	-100%
Sex Crimes - Minor	0	0	N/C	0	0	N/C	0	0	N/C	0	0	N/C	8	0	-100%
Theft - Felony	2	2	0%	11	7	-36%	4	7	75%	3	6	100%	8	6	-25%
Theft - Misdemeanor	2	1	-50%	25	10	-60%	8	4	-50%	7	5	-29%	5	8	60%
Vandalism	3	10	233%	26	12	-54%	41	9	-78%	5	9	80%	28	10	-64%
<b>TOTAL</b>	<b>27</b>	<b>54</b>	<b>100%</b>	<b>192</b>	<b>182</b>	<b>-5%</b>	<b>119</b>	<b>99</b>	<b>-17%</b>	<b>69</b>	<b>100</b>	<b>45%</b>	<b>110</b>	<b>107</b>	<b>-3%</b>

**5% increase in the overall number of crime reports taken during this time period.**

Information based on Crossroads and E-Reports data and cannot be considered complete.  
Comparisons are made as a point of reference and do not represent any particular trend unless otherwise noted.  
**When dealing with small numbers, remember small changes make large percentage changes.**  
NC = Not Calculable

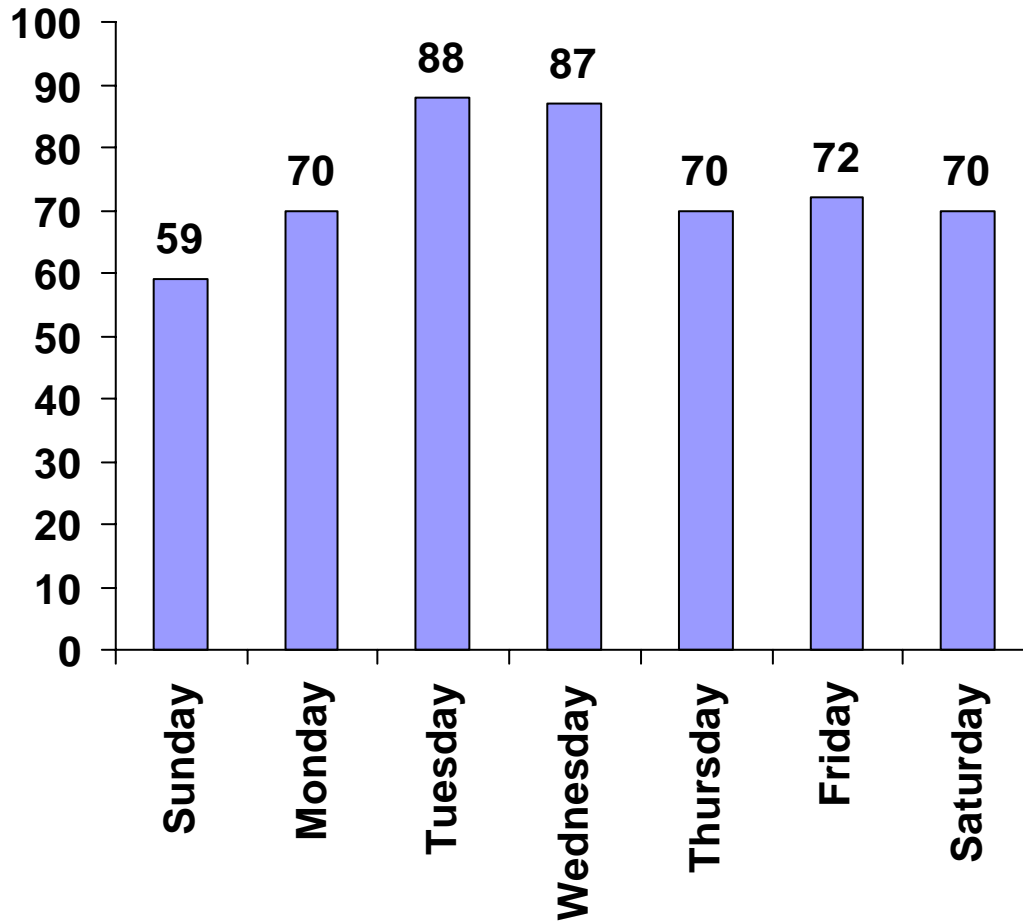
Prepared by K. Reichle  
Crime Analyst  
EGPD

# ELK GROVE POLICE DEPARTMENT

May - All Crime

## *Day of Week*

Crime Analysis

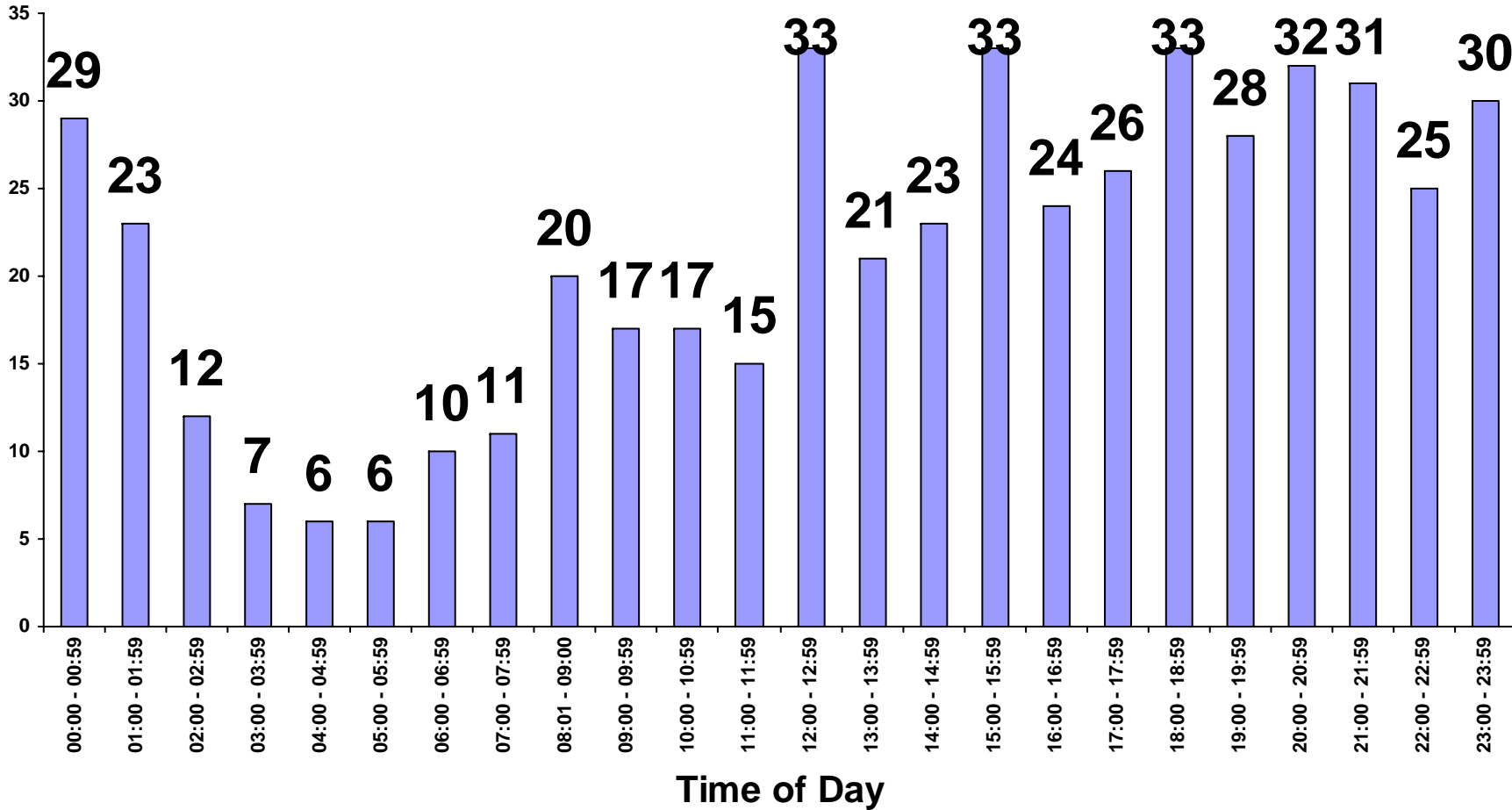


# ELK GROVE POLICE DEPARTMENT

May - All Crime

## *Time of Day*

Crime Analysis

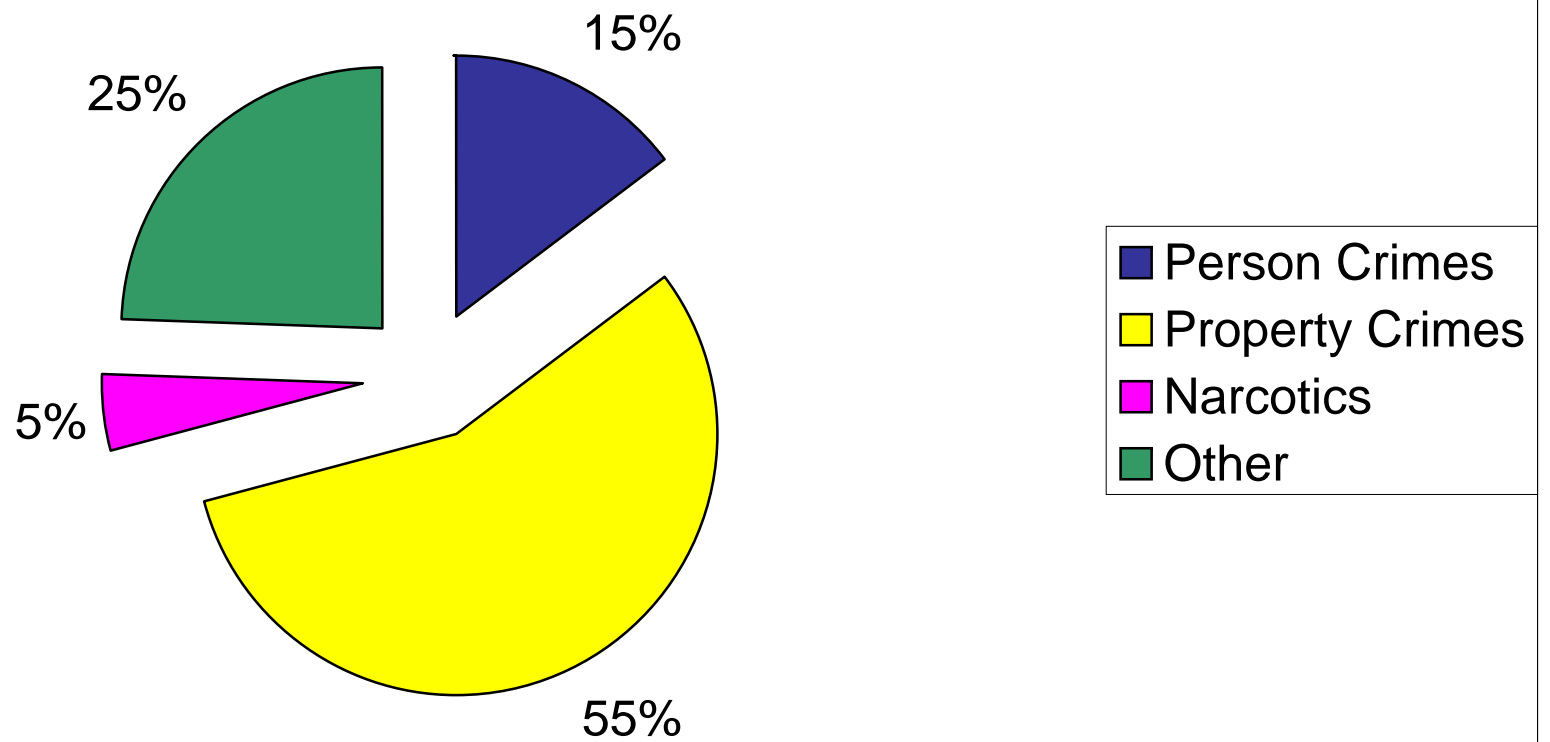


**ELK GROVE POLICE DEPARTMENT**  
**Crime Report Totals**

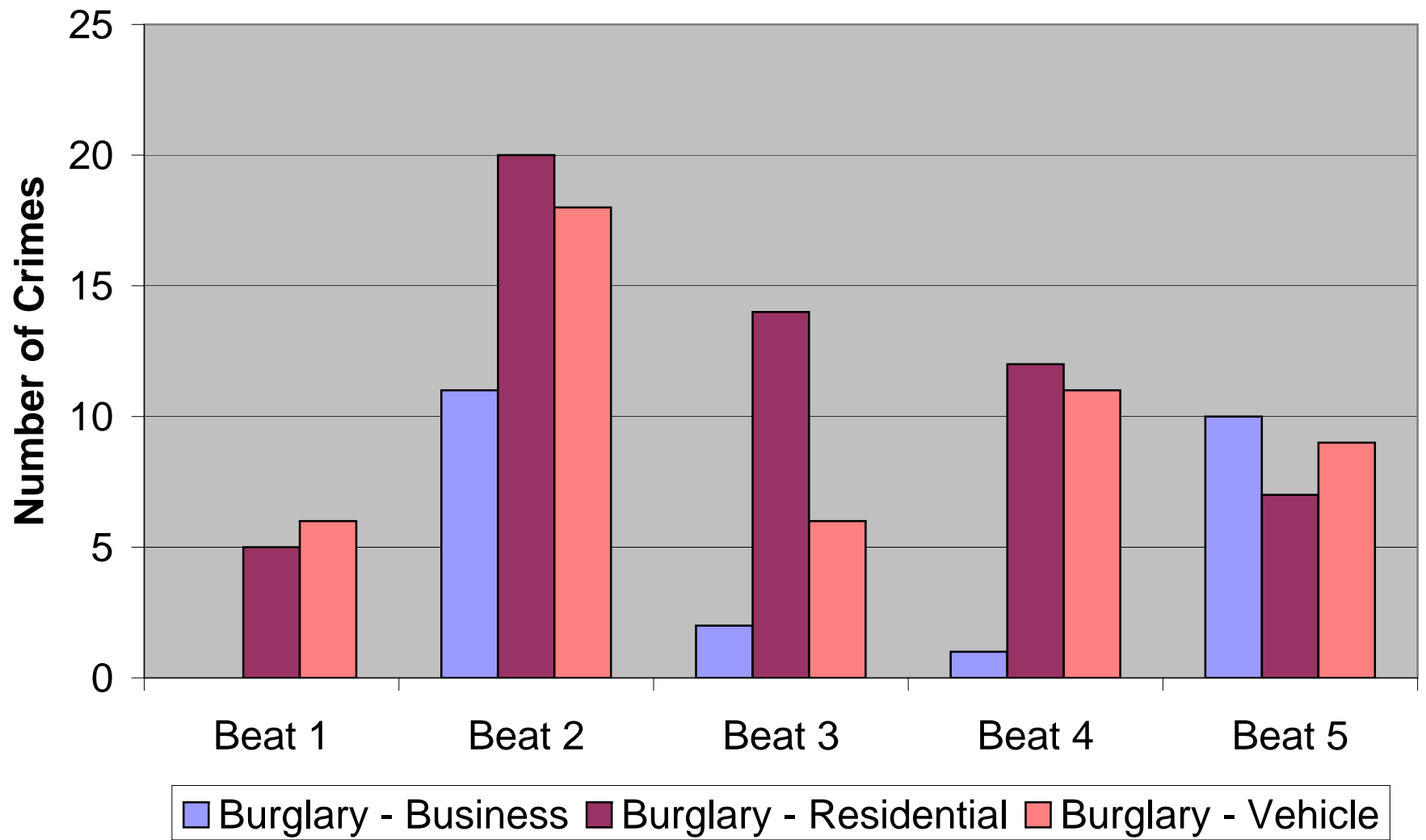
	May-06	Jun-06	Jul-06	Aug-06	Sep-06	Oct-06	Nov-06	Dec-06	Jan-07	Feb-07	Mar-07	Apr-07	May-07
<b>Arson</b>	1	1	0	2	0	1	0	0	1	0	0	0	0
<b>Assault - Felony</b>	12	29	36	27	38	22	8	15	16	12	17	12	19
<b>Assault - Misdemeanor</b>	5	6	14	5	13	9	6	8	11	14	6	10	8
<b>Auto Thefts</b>	63	26	53	43	57	63	55	58	43	37	39	38	40
<b>Burglary - Business</b>	21	17	18	17	11	17	19	18	23	18	30	33	24
<b>Burglary - Residential</b>	58	35	51	60	71	53	47	55	48	42	41	43	59
<b>Burglary - Vehicle</b>	97	79	60	64	61	80	74	75	71	67	67	43	51
<b>Child Abuse/Neglect</b>	5	6	5	9	3	3	2	3	6	6	15	3	6
<b>Domestic Violence</b>	19	16	24	32	28	24	28	28	34	35	25	32	27
<b>Elder Abuse</b>	0	1	1	0	0	0	1	0	0	2	1	1	1
<b>Financial Crimes</b>	22	54	60	34	41	20	18	26	30	31	25	21	26
<b>Hate Crimes</b>	0	0	0	1	0	0	0	0	0	0	0	0	1
<b>Homicide/Attempted</b>	0	0	0	0	0	0	0	1	0	0	0	0	2
<b>Narcotic/Drugs</b>	0	8	10	15	22	21	15	15	22	23	26	21	25
<b>Other</b>	32	60	125	108	125	117	69	104	103	95	100	112	135
<b>Parole/Probation Violation</b>	0	0	1	0	0	0	0	0	2	2	1	2	1
<b>Rape</b>	1	1	1	0	2	0	2	0	0	1	0	0	2
<b>Robbery</b>	8	11	10	9	12	10	20	7	9	11	13	12	14
<b>Sex Crimes - Adult</b>	2	0	0	11	9	4	4	1	2	0	0	1	1
<b>Sex Crimes - Minor</b>	2	0	3	3	4	1	1	2	1	1	2	0	0
<b>Theft - Felony</b>	26	37	42	31	4	37	41	40	30	31	22	46	29
<b>Theft - Misdemeanor</b>	48	42	55	42	32	61	33	49	34	40	34	39	31
<b>Vandalism</b>	107	93	117	89	64	73	109	98	41	73	56	61	52
<b>TOTAL</b>	<b>529</b>	<b>522</b>	<b>686</b>	<b>602</b>	<b>597</b>	<b>616</b>	<b>552</b>	<b>603</b>	<b>527</b>	<b>541</b>	<b>520</b>	<b>530</b>	<b>554</b>

*Based on Crossroads data and cannot be considered complete.  
Monthly totals are updated to reflect current crime report totals.*

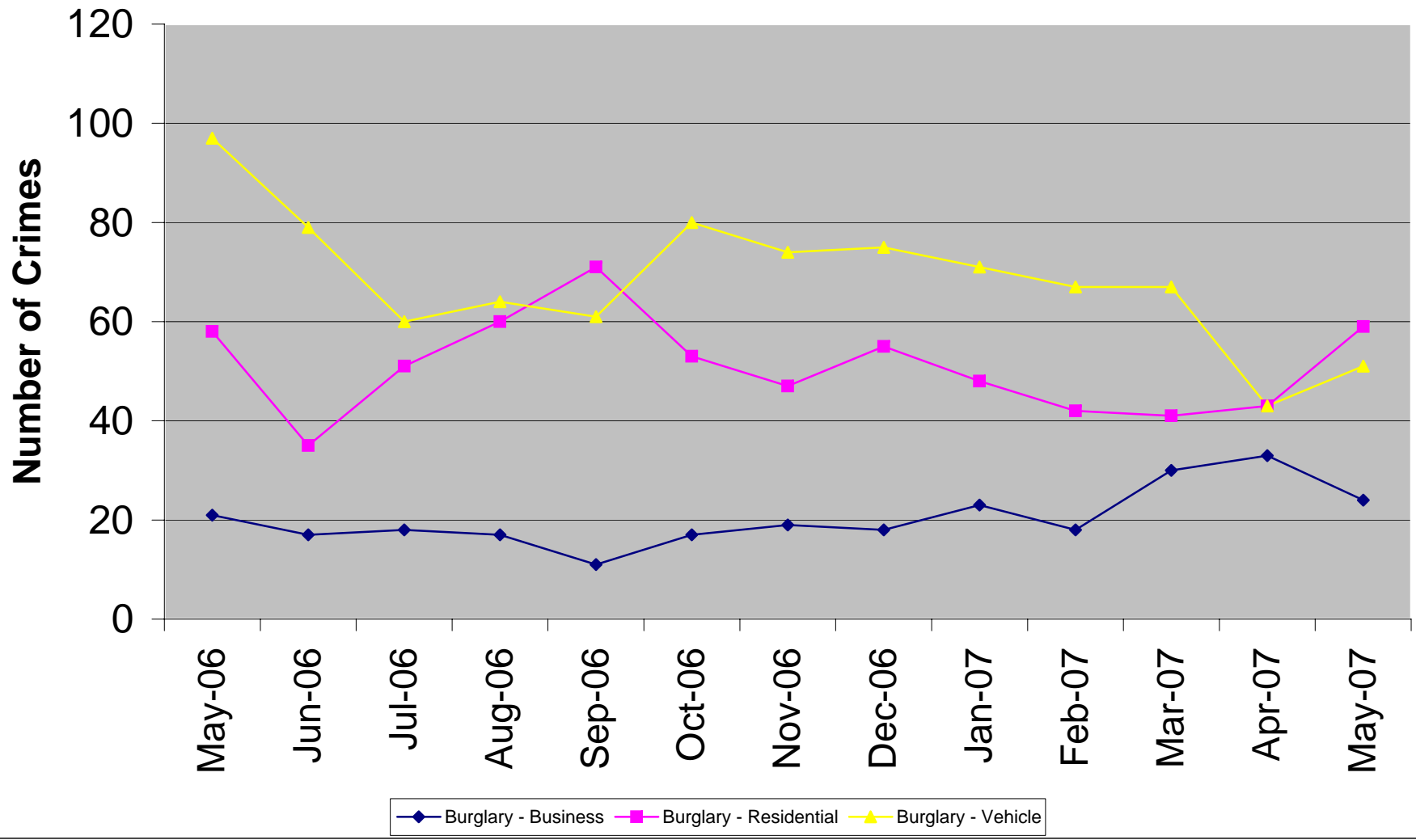
# All Crime - May 2007



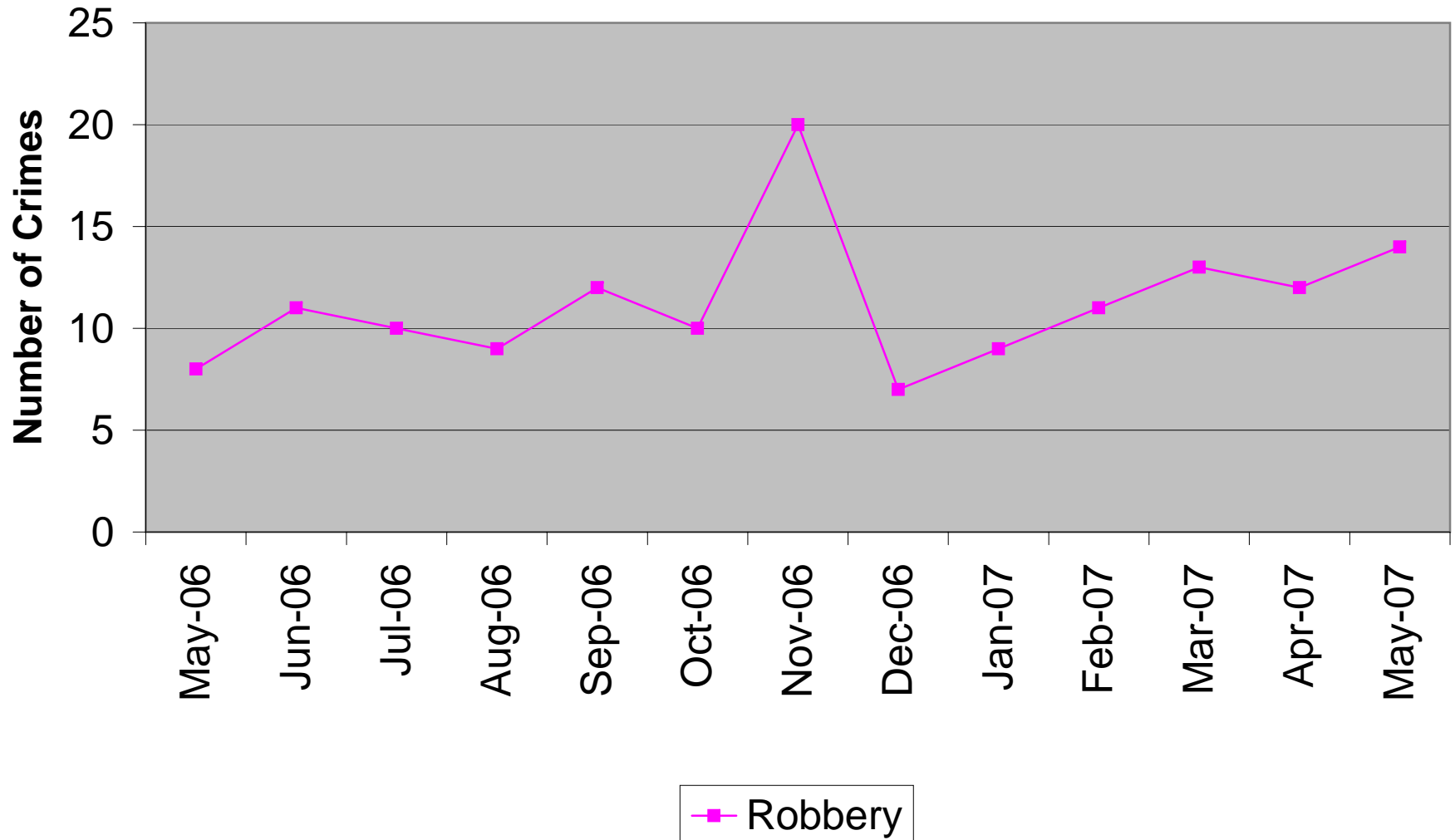
## Burglaries by Beat



## Burglary - May 2006 to May 2007



## Robbery - May 2006 to May 2007



## Theft - May 2006 to May 2007

