

ELK GROVE POLICE DEPARTMENT
CRIME BY BEAT
 April 2007

CRIME BY TITLE	Beat 1	Beat 2	Beat 3	Beat 4	Beat 5	TOTAL
Arson	0	0	0	0	0	0
Assault - Felony	3	3	2	0	4	12
Assault - Misdemeanor	1	3	2	1	3	10
Auto Theft	3	15	9	5	6	38
Burglary - Business	2	19	2	3	6	32
Burglary - Residential	3	11	10	7	12	43
Burglary - Vehicle	7	18	9	2	6	42
Child Abuse/Neglect	0	1	0	1	1	3
Domestic Violence	2	12	4	10	1	29
Elder Abuse	0	1	0	0	0	1
Financial Crimes	2	4	4	3	7	20
Hate Crimes	0	0	0	0	0	0
Homicide/Attempted	0	0	0	0	0	0
Narcotics/Drugs	3	6	5	1	6	21
Others	11	45	15	15	25	111
Parole/Probation	1	1	0	0	0	2
Rape	0	0	0	0	0	0
Robbery	2	3	3	3	1	12
Sex Crimes - Adult	0	0	1	0	0	1
Sex Crimes - Minor	0	0	0	0	0	0
Theft - Felony	5	15	8	8	9	45
Theft - Misdemeanor	4	11	10	4	8	37
Vandalism	5	21	11	12	10	59
Totals	54	189	95	75	105	518

Figures based on E-Reports data and cannot be considered complete.

Prepared by K. Reichle
 EGPD Crime Analyst

Crime Type	Beat 1			Beat 2			Beat 3			Beat 4			Beat 5		
	Apr-06	Apr-07	%	Apr-06	Apr-07	%	Apr-06	Apr-07	%	Apr-06	Apr-07	%	Apr-06	Apr-07	%
Arson	0	0	N/C	0	0	N/C	0	0	N/C	0	0	N/C	1	0	-100%
Assault - Felony	0	3	N/C	4	3	-25%	2	2	0%	2	0	-100%	0	4	N/C
Assault - Misdemeanor	0	1	N/C	1	3	200%	2	2	0%	0	1	N/C	1	3	200%
Auto Theft	5	3	-40%	18	15	-17%	11	9	-18%	4	5	25%	5	6	20%
Burglary - Business	1	2	100%	0	19	N/C	0	2	N/C	1	3	200%	3	6	100%
Burglary - Residential	4	3	-25%	21	11	-48%	8	10	25%	9	7	-22%	8	12	50%
Burglary - Vehicle	6	7	17%	29	18	-38%	13	9	-31%	9	2	-78%	15	6	-60%
Child Abuse/Neglect	0	0	N/C	0	1	N/C	0	0	N/C	0	1	N/C	0	1	N/C
Domestic Violence	1	2	100%	6	12	100%	2	4	100%	4	10	150%	5	1	-80%
Elder Abuse	0	0	N/C	0	1	N/C	0	0	N/C	0	0	N/C	1	0	-100%
Financial Crimes	0	2	N/C	40	4	-90%	5	4	-20%	3	3	0%	2	7	250%
Hate Crimes	0	0	N/C	0	0	N/C	0	0	N/C	0	0	N/C	0	0	N/C
Homicide/Attempted	0	0	N/C	0	0	N/C	0	0	N/C	0	0	N/C	0	0	N/C
Narcotics/Drugs	1	3	200%	1	6	500%	4	5	25%	1	1	0%	4	6	50%
Others	4	11	175%	5	45	800%	5	15	200%	1	15	1400%	0	25	N/C
Parole/Probation	0	1	N/C	0	1	N/C	0	0	N/C	1	0	-100%	0	0	N/C
Rape	0	0	N/C	0	0	N/C	0	0	N/C	0	0	N/C	0	0	N/C
Robbery	2	2	0%	10	3	-70%	1	3	200%	2	3	50%	2	1	-50%
Sex Crimes - Adult	0	0	N/C	0	0	N/C	0	1	N/C	1	0	-100%	0	0	N/C
Sex Crimes - Minor	0	0	N/C	0	0	N/C	0	0	N/C	0	0	N/C	0	0	N/C
Theft - Felony	4	5	25%	12	15	25%	6	8	33%	4	8	100%	7	9	29%
Theft - Misdemeanor	3	4	33%	18	11	-39%	5	10	100%	4	4	0%	9	8	-11%
Vandalism	10	5	-50%	28	21	-25%	5	11	120%	10	12	20%	18	10	-44%
TOTAL	41	54	32%	193	189	-2%	69	95	38%	56	75	34%	81	105	30%

18% increase in the overall number of crime reports taken during this time period.

Comparisons are made as a point of reference and do not represent any particular trend unless otherwise noted.

When dealing with small numbers, remember small changes make large percentage changes.

NC = Not Calculable

Prepared by K. Reichle

Crime Analyst

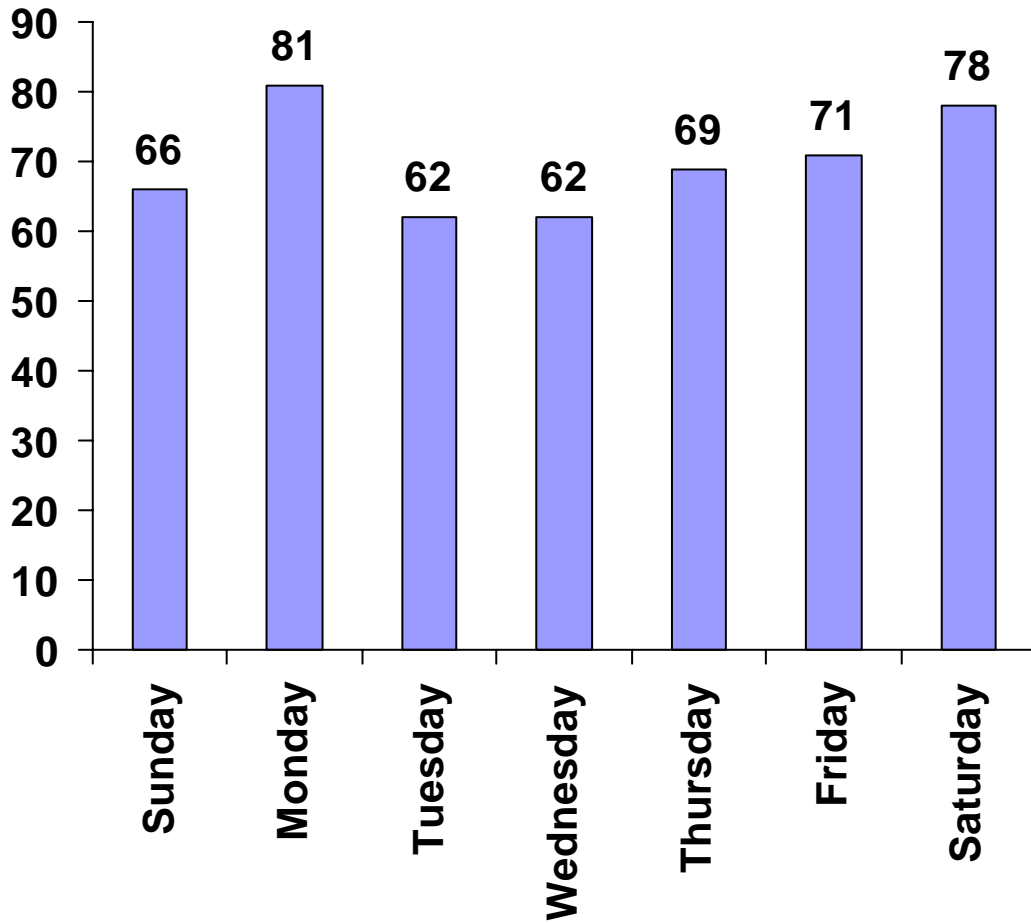
EGPD

ELK GROVE POLICE DEPARTMENT

Crime - Elk Grove

Day of Week

Crime Analysis

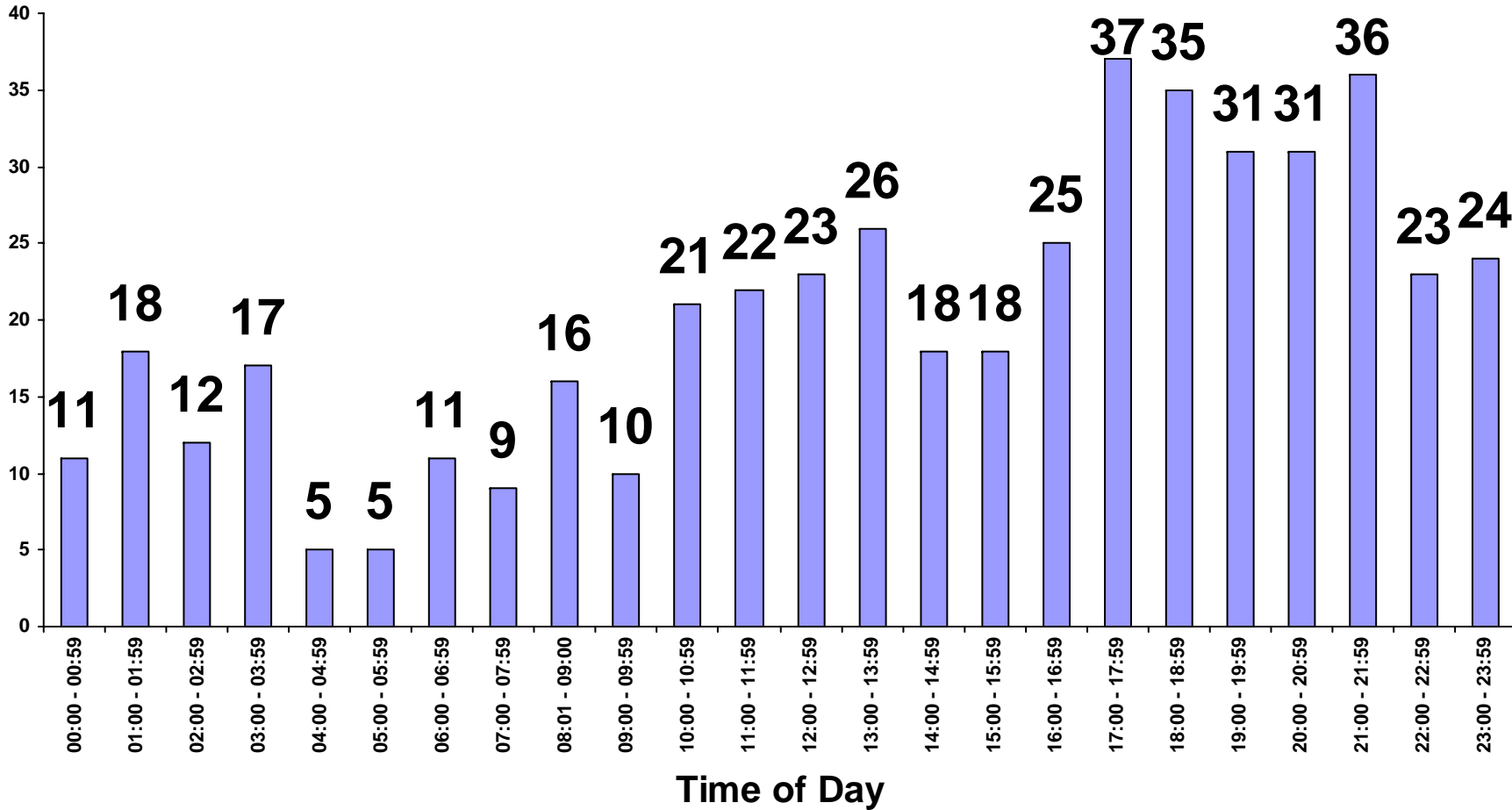


ELK GROVE POLICE DEPARTMENT

Crime - Elk Grove

Time of Day

Crime Analysis

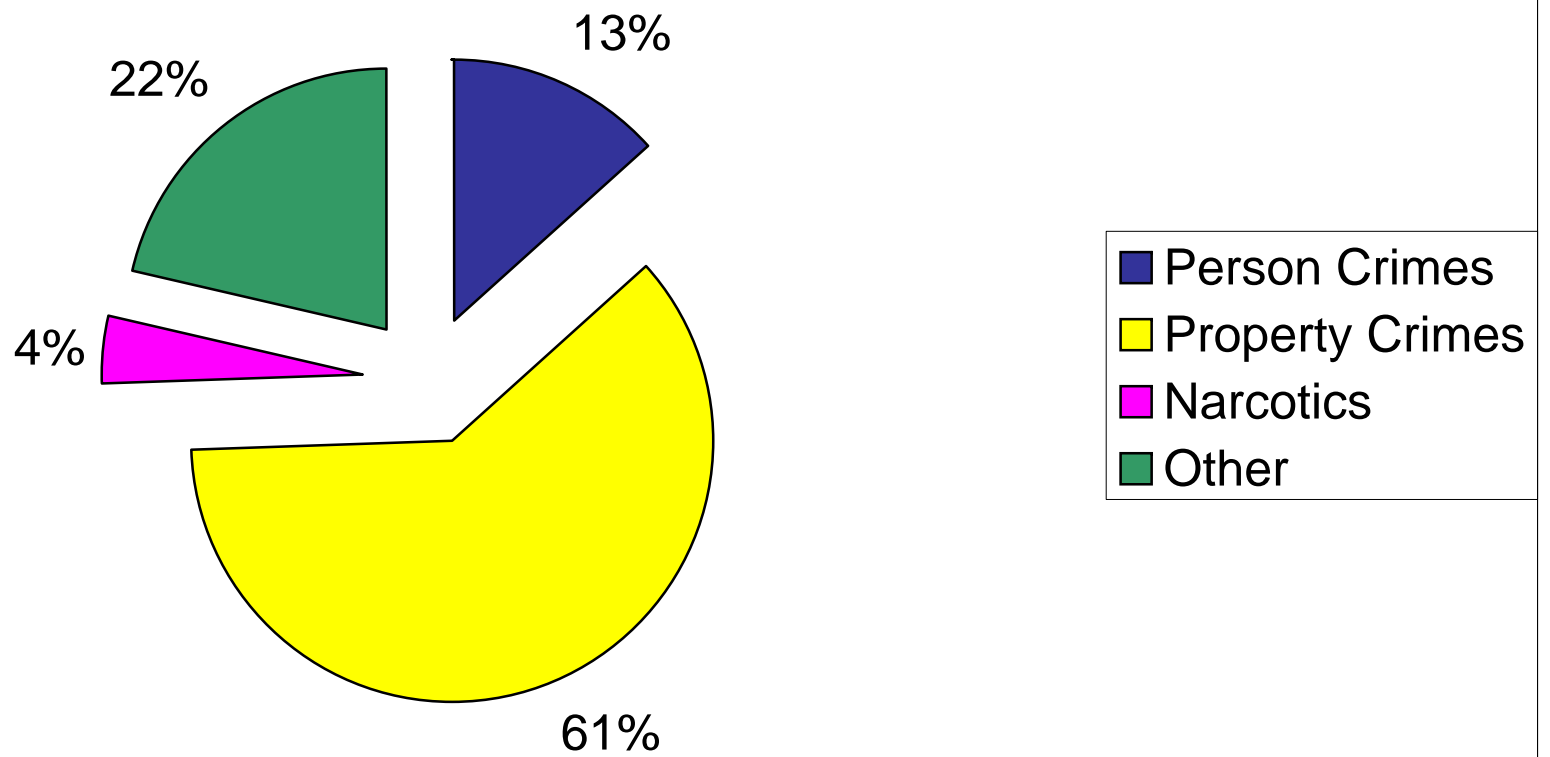


ELK GROVE POLICE DEPARTMENT
Crime Report Totals

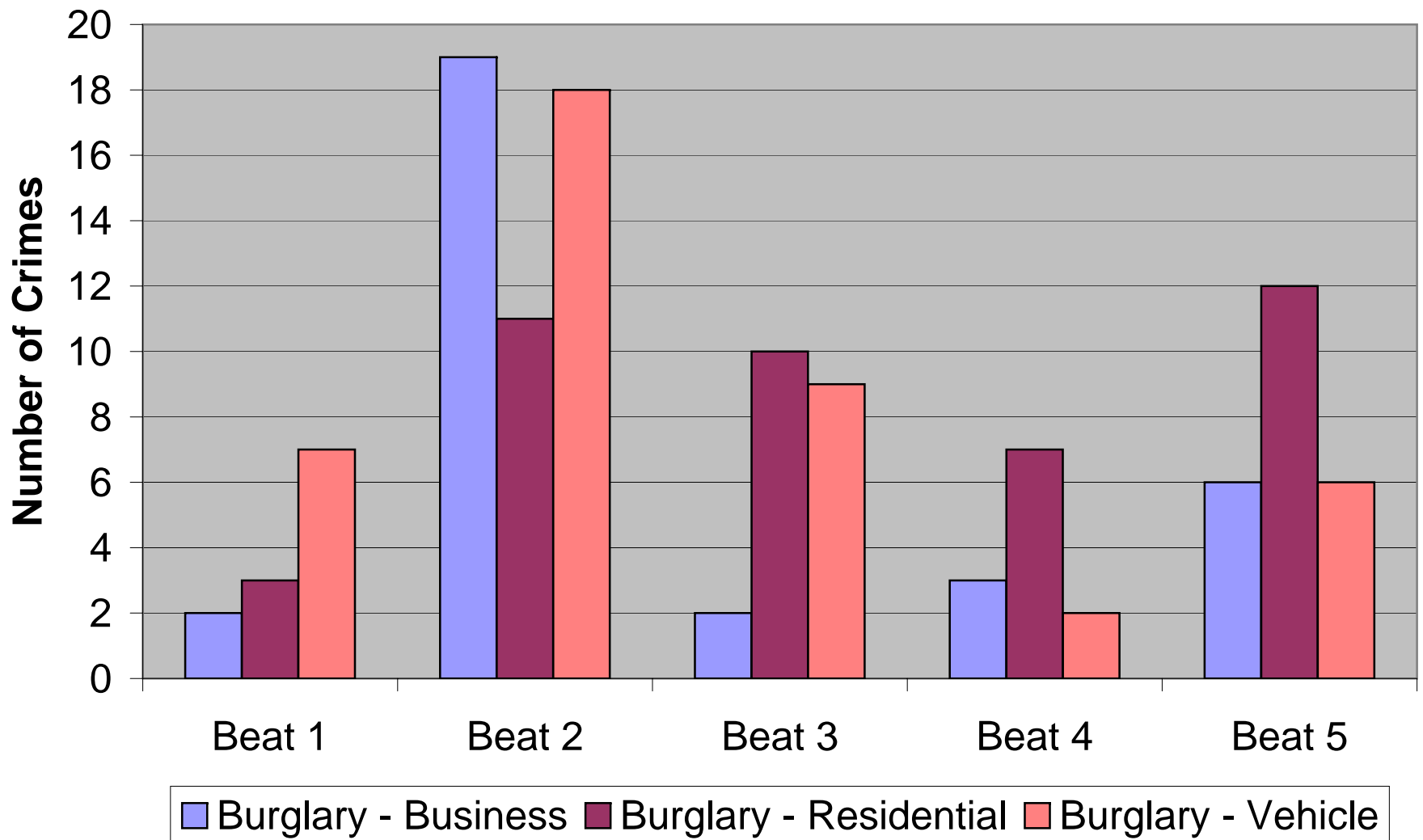
	Apr-06	May-06	Jun-06	Jul-06	Aug-06	Sep-06	Oct-06	Nov-06	Dec-06	Jan-07	Feb-07	Mar-07	Apr-07
Arson	1	1	1	0	2	0	1	0	0	1	0	0	0
Assault - Felony	9	12	29	36	27	38	22	8	15	16	12	17	12
Assault - Misdemeanor	4	5	6	14	5	13	9	6	8	11	14	6	10
Auto Thefts	43	63	26	53	43	57	63	55	58	43	37	39	38
Burglary - Business	3	21	17	18	17	11	17	19	18	23	18	30	33
Burglary - Residential	39	58	35	51	60	71	53	47	55	48	42	41	43
Burglary - Vehicle	61	97	79	60	64	61	80	74	75	71	67	67	43
Child Abuse/Neglect	0	5	6	5	9	3	3	2	3	6	6	15	3
Domestic Violence	15	19	16	24	32	28	24	28	28	34	35	25	32
Elder Abuse	1	0	1	1	0	0	0	1	0	0	2	1	1
Financial Crimes	39	22	54	60	34	41	20	18	26	30	31	25	21
Hate Crimes	0	0	0	0	1	0	0	0	0	0	0	0	0
Homicide/Attempted	0	0	0	0	0	0	0	0	1	0	0	0	0
Narcotic/Drugs	8	0	8	10	15	22	21	15	15	22	23	26	21
Other	16	32	60	125	108	125	117	69	104	103	95	100	112
Parole/Probation Violation	1	0	0	1	0	0	0	0	0	2	2	1	2
Rape	0	1	1	1	0	2	0	2	0	0	1	0	0
Robbery	13	8	11	10	9	12	10	20	7	9	11	13	12
Sex Crimes - Adult	0	2	0	0	11	9	4	4	1	2	0	0	1
Sex Crimes - Minor	0	2	0	3	3	4	1	1	2	1	1	2	0
Theft - Felony	29	26	37	42	31	4	37	41	40	30	31	22	46
Theft - Misdemeanor	36	48	42	55	42	32	61	33	49	34	40	34	39
Vandalism	51	107	93	117	89	64	73	109	98	41	73	56	61
TOTAL	369	529	522	686	602	597	616	552	603	527	541	520	530

*Based on Crossroads data and cannot be considered complete.
Monthly totals are updated to reflect current crime report totals.*

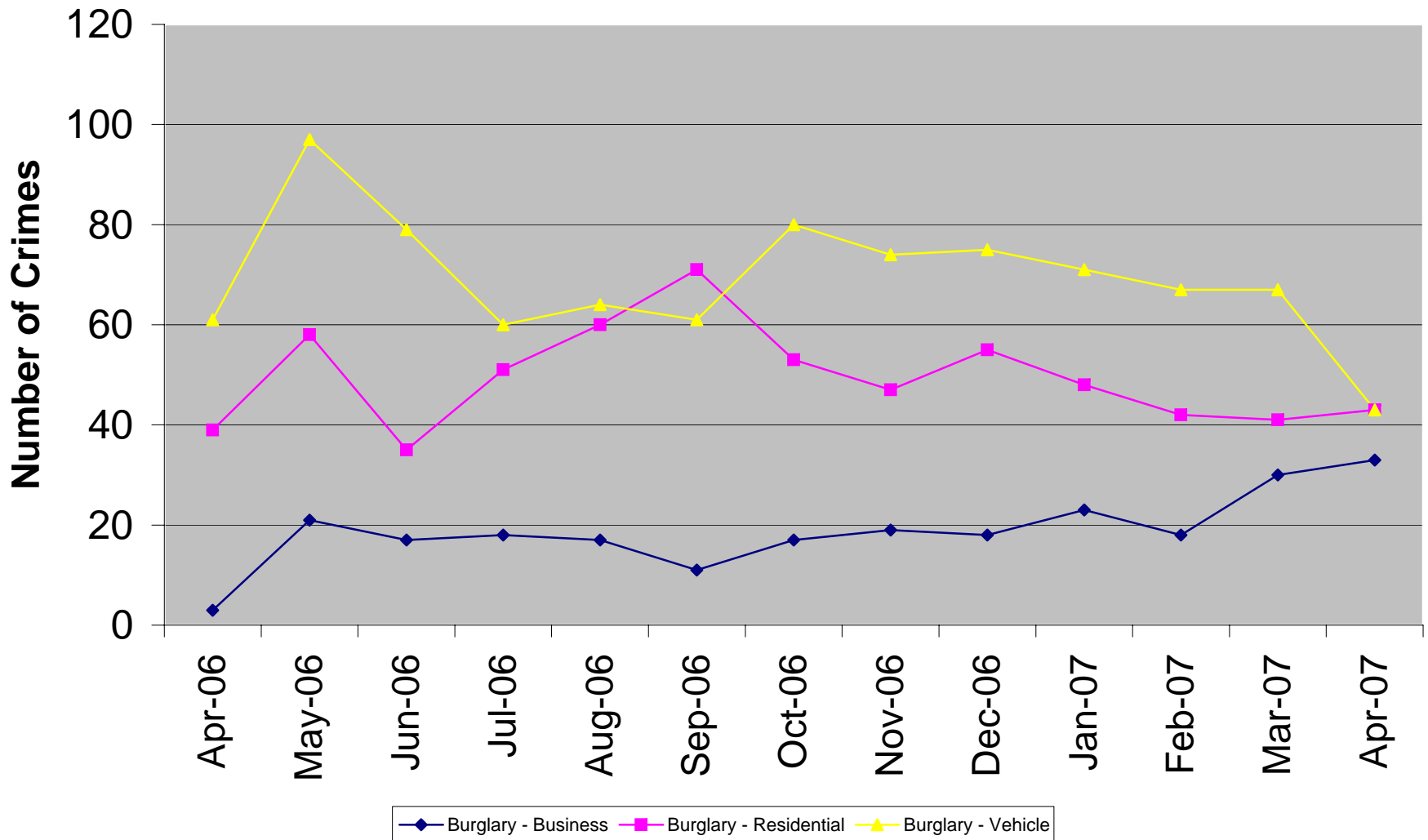
All Crime - April 2007



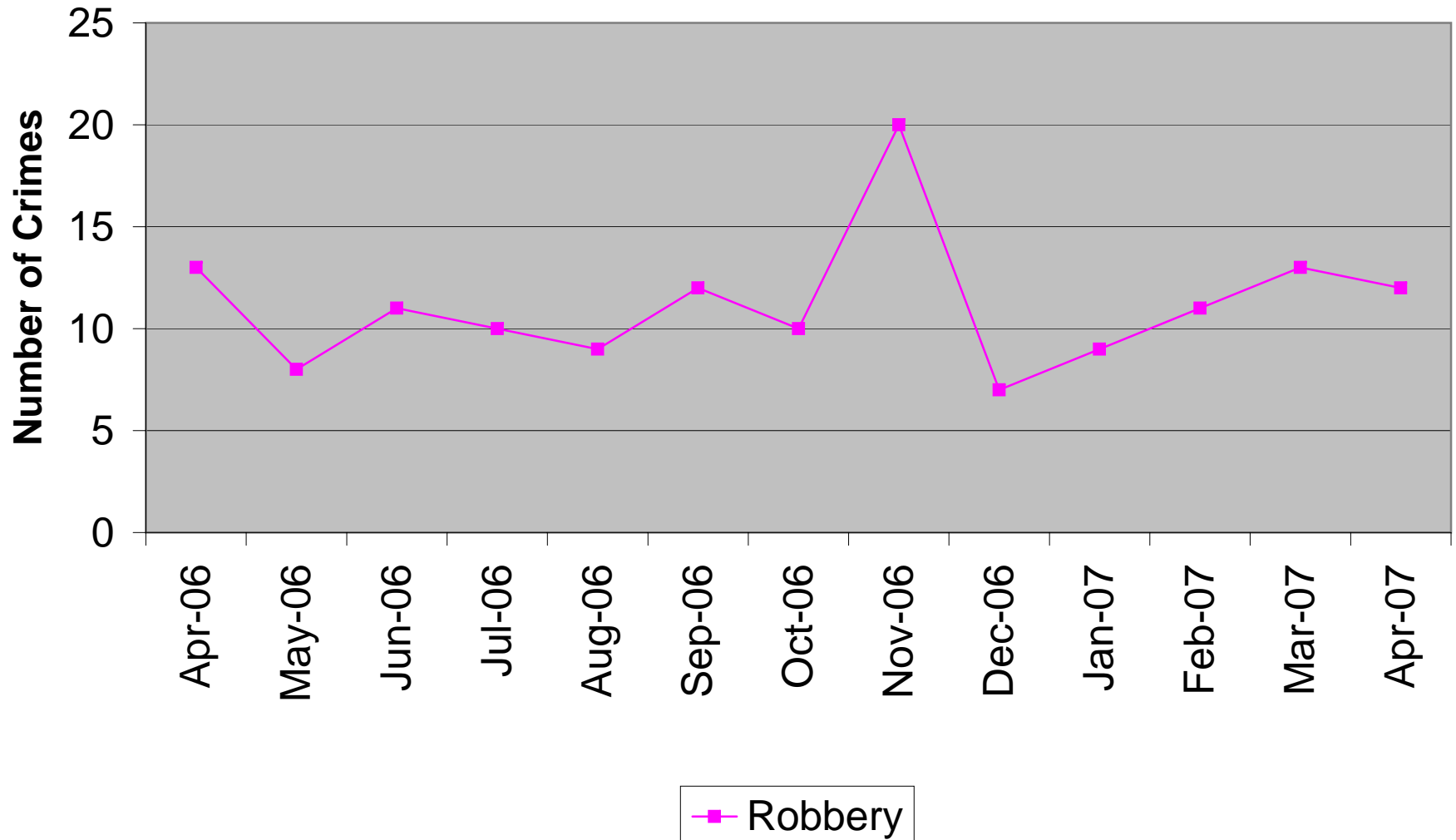
Burglaries by Beat



Burglary - April 2006 to April 2007



Robbery - April 2006 to April 2007



Theft - April 2006 to April 2007

